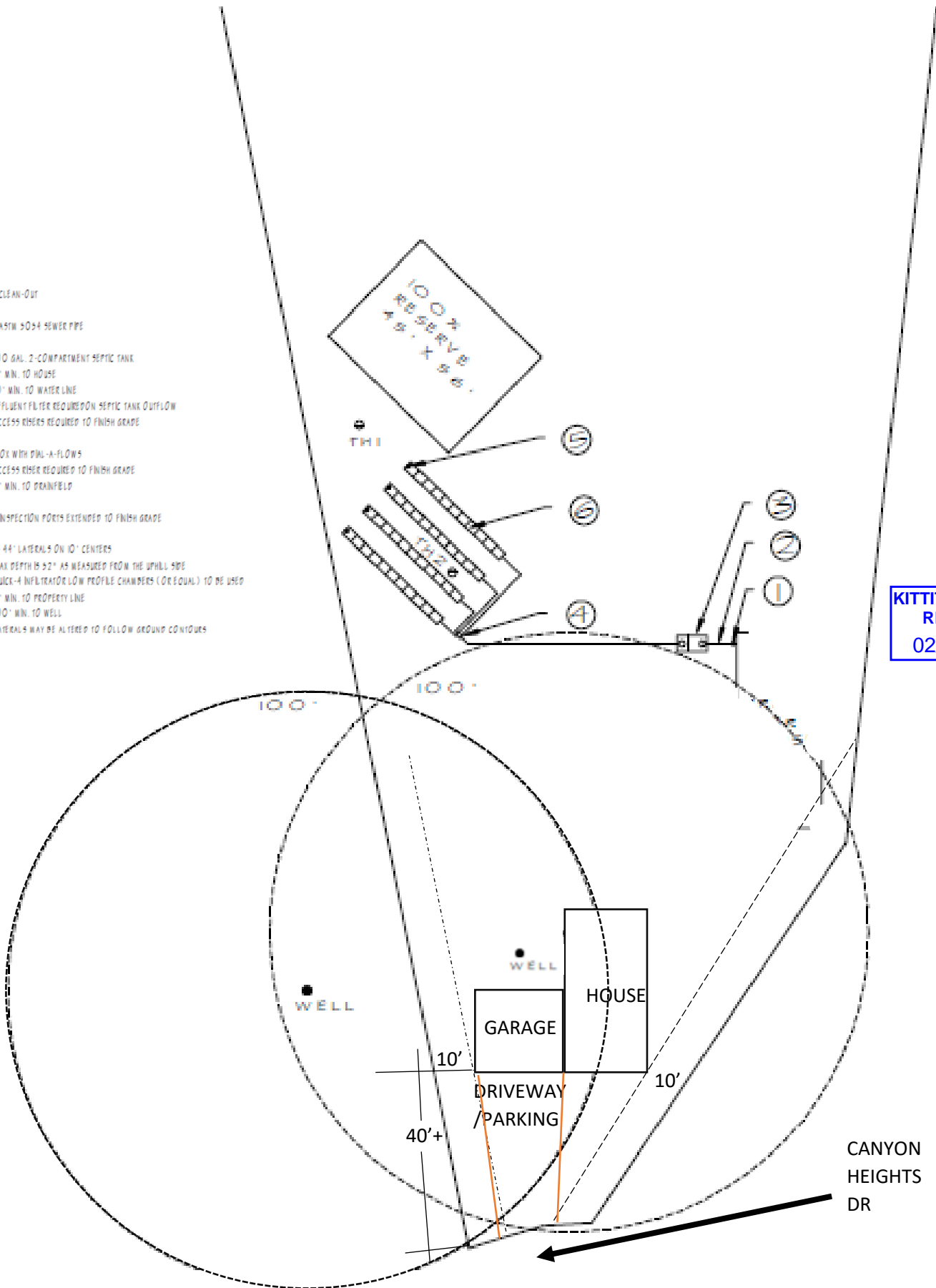


- ① 4" CLEAN-OUT
- ② 4" ASTM 3034 SEWER PIPE
- ③ 1000 GAL. 2-COMPARTMENT SEPTIC TANK
 - * 5" MIN. TO HOUSE
 - * 10" MIN. TO WATER LINE
 - * EFFLUENT FILTER REQUIRED ON SEPTIC TANK OUTFLOW
 - * ACCESS RISERS REQUIRED TO FINISH GRADE
- ④ P-BOX WITH P/M-A-FLOWS
 - * ACCESS RISER REQUIRED TO FINISH GRADE
 - * 5" MIN. TO DRAINFIELD
- ⑤ 4" INSPECTION PORTS EXTENDED TO FINISH GRADE
- ⑥ 4" - 44" LATERALS ON 10' CENTERS
 - * MAX DEPTH IS 32" AS MEASURED FROM THE UPHILL SIDE
 - * QUICK-4 INFILTRATOR LOW PROFILE CHAMBERS (OR EQUAL) TO BE USED
 - * 5" MIN. TO PROPERTY LINE
 - * 100" MIN. TO WELL
 - * LATERALS MAY BE ALTERED TO FOLLOW GROUND CONTOURS



KITITAS CO CDS
RECEIVED
02/25/2026